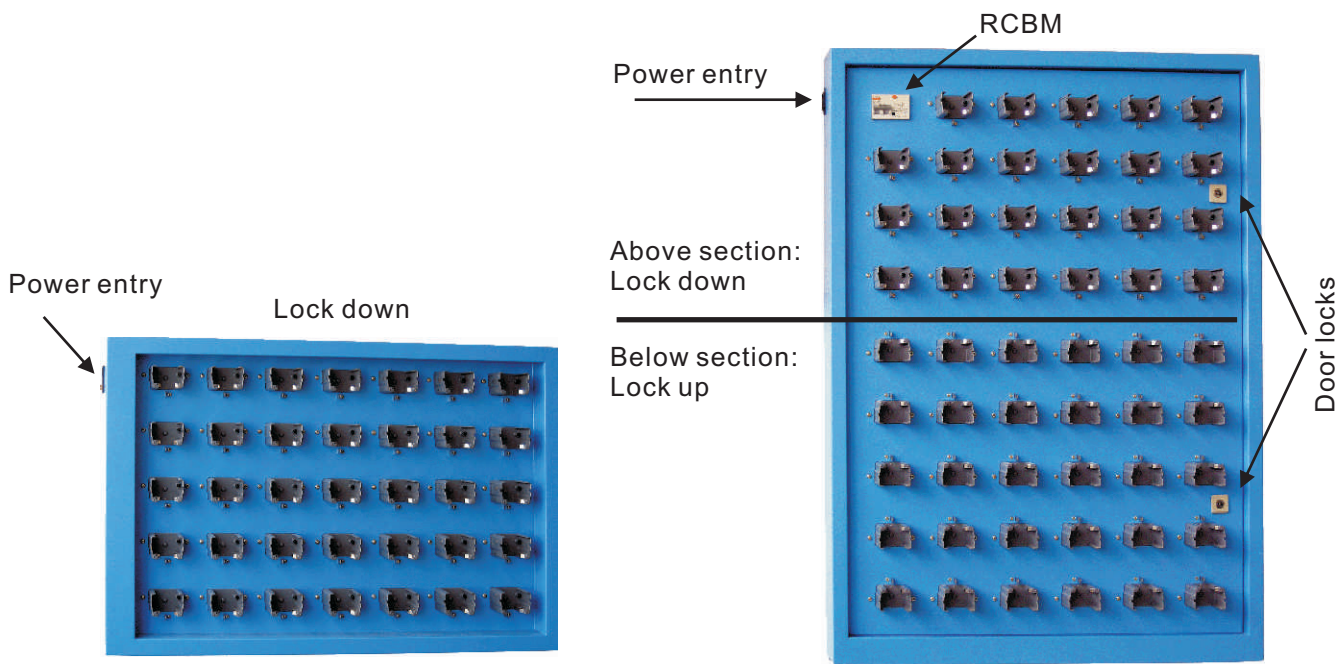


CB53E/CB35E *For External Charging Lamps, 53/35-units* **ROOBUCK**

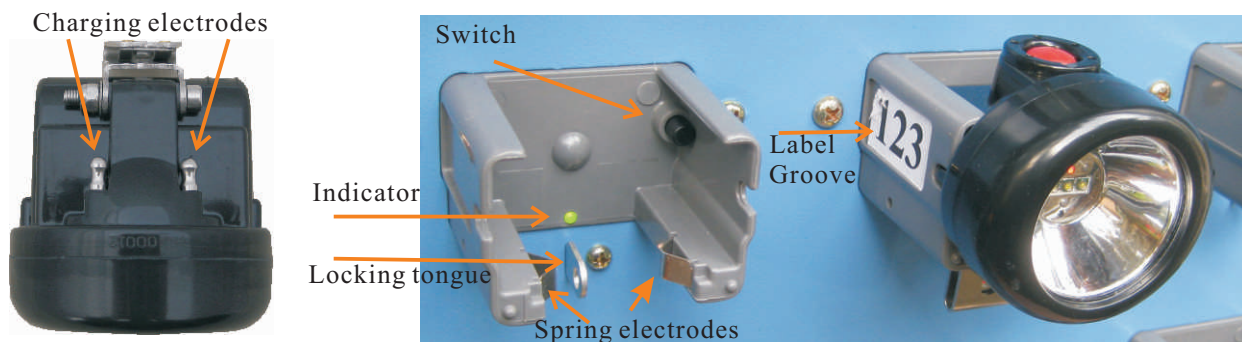
CB53E and CB35E Charging Banks are wall mounting charging facilities to charge 53 or 35 units of external charging electrode models of cordless caplamps and helmet lamps, including KC3E, KC3E-Ex and KH3E-Ex. They are compact, light weight, high capacity, low current, safe and easy to use. After starting the charging process, no further attention is needed as the automatic over-load protection function in each charging unit will cut off that circuit when the lamp battery is fully charged. Each charging unit has an indicator for charging process indication. The lamp can be locked to the Charging Bank. CB53E has 9 rows and 6 charging units in each row except the first row, which has 5 charging units. CB35E has 5 rows and 7 charging units in each row.

PANEL



CHARGING UNIT

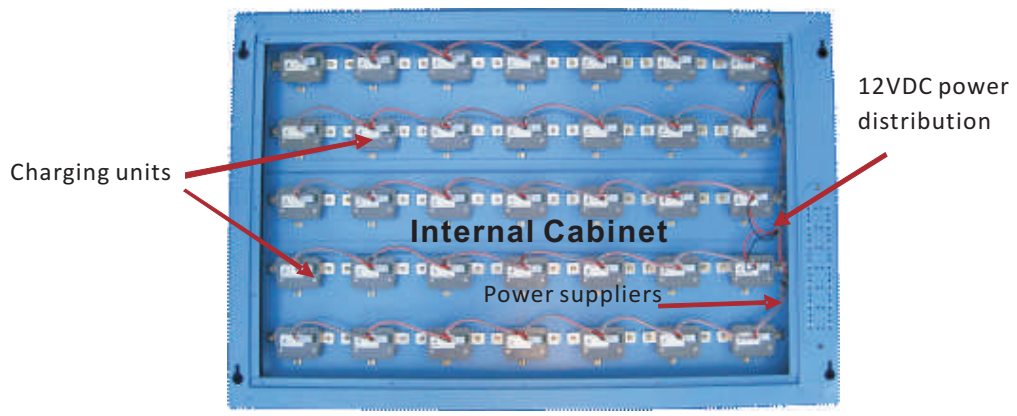
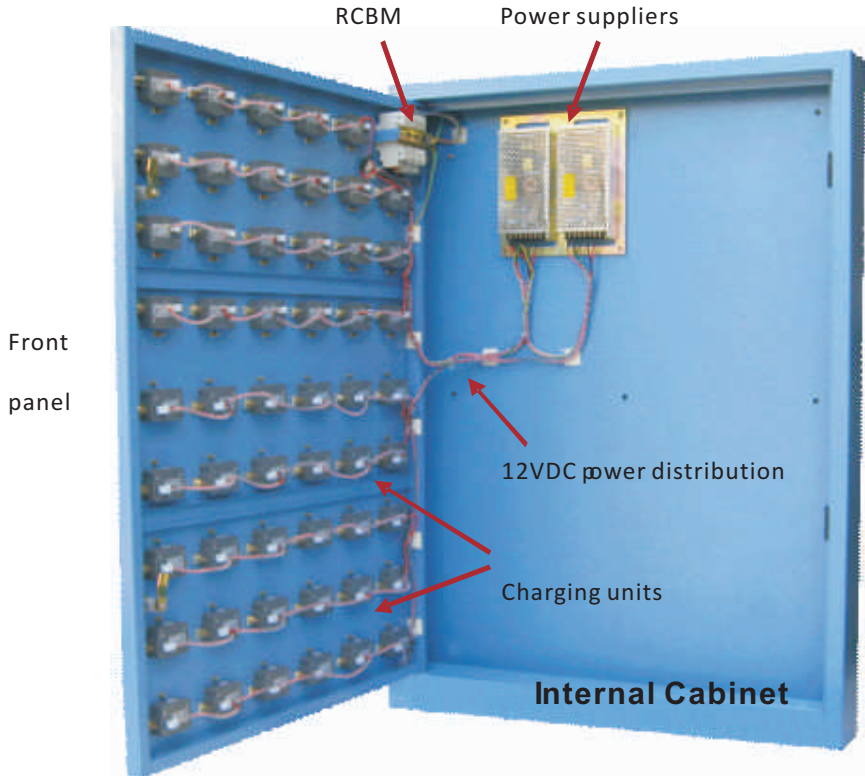
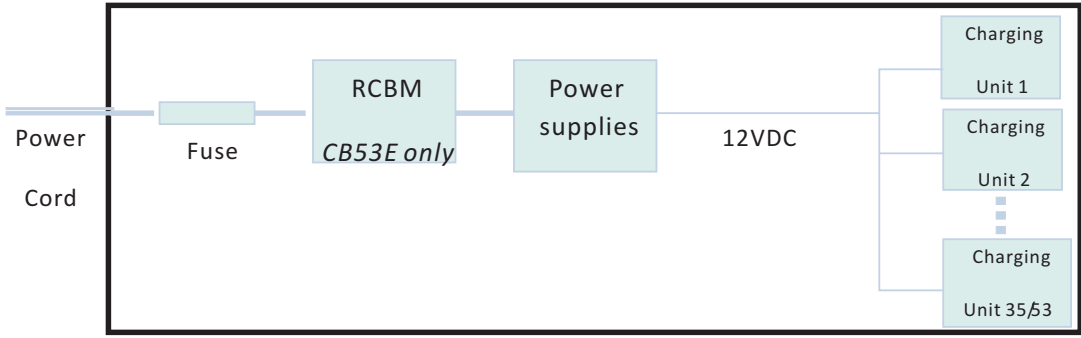
A charging unit supplies a 5.1VDC power to the lamp. Two spring plate style electrical contacts not only guarantee the electrical contact to lamp electrodes but also firmly hold the lamp in place. A switch is located underneath the lamp. With the lamp inserted properly, the electrodes are connected and the switch is on. Each unit has a locking facility for padlocking the lamp to the panel. A charging indicator indicates the charging state of this lamp. There is a label groove on each side of the Charging unit, where you can stick a label to identify your position with your name, work number, group, photo or other information.



CB53E/CB35E *For External Charging Lamps, 53/35-units* **ROOBUCK**

POWER DISTRIBUTION

The Charging Banks are powered from the 240VAC mains. A power supply generates a 12VDC and supplies it to all charging units. Thus, only extra low voltage is distributed in the cabinet thereby guaranteeing its safety. For CB53E, a Residual and Fault Current Limiting Circuit Breaker (RCBM) is located immediately after the power fuse for further safety of personnel.



CB53E/CB35E *For External Charging Lamps, 53/35-units*

Charging Bank

ROOBUCK

LABEL IDENTIFICATION

There is a label groove in both left and right sides of each charging unit. You can label the charging position using position number, work number, miner's name, group name or other identification.



STEALING PREVENTION

There is a padlock bracket under each charging unit. The lamp can be padlocked to this bracket through the lamp clip. It is suggested to padlock the lamp whenever leaving it plugged in. It is recommended that mines use the Charging Bank as the only charging facility so that if a lamp is stolen it cannot be recharged. The individual chargers are intended for individual use only. For the CB53E, the charging units in upper 4 row place locks under the lamps. The charging units in lower 5 rows are in opposite direction so to place the locks above the lamps. Such an arrangement make the lamps easy access no matter the lamp is in a higher position or lower position.

SERVICE

CB53E circuits are accessible from the front panel for easy servicing. The front panel is the door. There are two locks, which can be opened using the supplied keys. CB35E circuits are accessible from the back panel, which can be opened by simply unscrewing the screws.

INSTALLATION

CB35E: Two mounting holes are located in each of the two top corners of the frame. Two mounting kits are supplied. Mount the screws on the wall and the charging banks can be hung on the screws.
CB53E: Four mounting holes are located in each of the four corners of the back panel. Four mounting kits are supplied. Two foot pads are also supplied in case the Charging bank will be standing on the

CHARGING PROCEDURE

There are two Charging Indicators as follows:

LCI (Lamp Charging Indicator): LCI is in the lamp. It only indicates whether the charging power is connected or not. It is always in red.

CCI (Charger Charging Indicator): CCI is on the charging bank or on the charger. It indicates the charging stages in two colours, by detecting the charging current. Green - No or small charging current; Red - Large charging current.

- Find a charging unit without lamp. The corresponding CCI should be 'on' in green;
- Turn off the lamp;
- Plug the charging cable into the charging socket of the lamp and hook the lamp on the unit;
- The LCI should turn on; Otherwise, check the connection;
- The CCI should turn red, indicating the initial charging stage if the lamp battery level is low;
- After a few hours, the CCI will turn the colour in red and green alternatively, indicating the late charging stage;
- When the CCI stays in 'green', the charging process is completed and the lamp is fully charged.

SPECIFICATIONS

Model	CB35E	CB53E
Input:	AC 240V	
Output:	DC 5.1V / 500mA	
Power Consumption:	< 175W	< 265W
Dimension:	87x11x56cm	84x13x110cm
Weight:	16kg	31kg

